

## Room hire

We have various rooms available for hire. Whether you are looking for 1-2-1 meeting rooms, group meeting, a place to deliver training or a social community space; we have options available.

## Contact

Call us on **0330 2020 571 opt. 3** or email: [enquiries@rotherhamrise.org.uk](mailto:enquiries@rotherhamrise.org.uk) for more information.

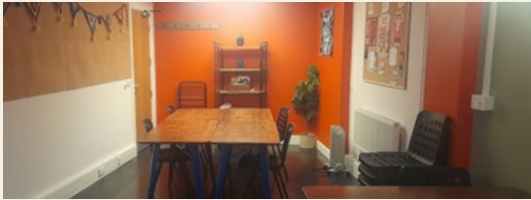



## Room hire

located at  
Rotherham Rise  
address:  
18 High Street,  
Rotherham,  
S60 1PP

## Ground floor options [wheelchair accessible]

### Woodland




 Seats max. 12 people

£12 per hour | £72 per full day

### Orchard



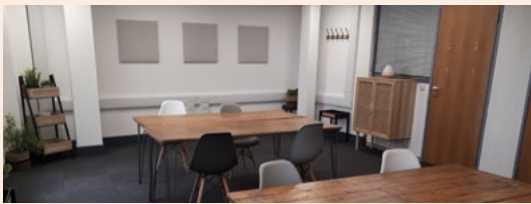
 Seats max. 10 people


£10 per hour | full day unavailable

Please note refreshments are not offered for Woodland and Orchard. However our Frith Space - community cafe is on the same floor and sells refreshments.

## First floor options

### Sycamore




 Seats max. 18 people

£16 per hour | £96 per full day

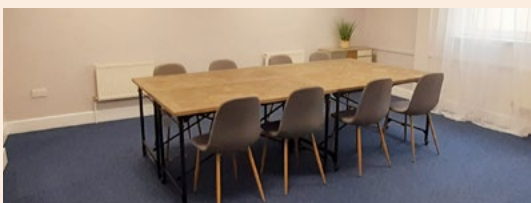
### Blossom




 Seats max. 18 people

£16 per hour | £96 per full day

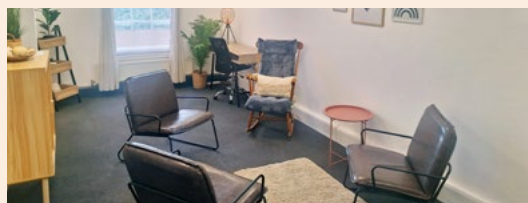
### Bramble




 Seats max. 12 people

£12 per hour | £72 per full day

### Thistle



 Seats max. 5 people (relaxed)

£10 per hour | £60 per full day

### Rosehip (inc.: Blossom & Bramble)

Rosehip offers a setting for **groups of up to 40**, nestled between the Bramble and Blossom rooms. It is exclusively available when reserved together with these 2 rooms, providing a comprehensive package perfect for conferences or team-building events. The space is adaptable for conference-style seating and includes additional rooms for breakout sessions or dining. A buffet option can be arranged on request.



£45 per hour | £270 per full day

**Refreshments can be booked for £1.20 per person, per session; morning/afternoon session.** Refreshments include tea, coffee (inc. decaf), and biscuits. A service charge applies for any refreshments brought in from outside.



Prices quoted are inclusive of VAT.


**Full day** constitutes **7 hours: 9am - 4pm.**


**Cancellation fee of £10 applies** if cancellation is not made at **least 2 working days prior** to the room hire start date.

Full Terms & Conditions will be sent with your booking confirmation.



Water is included in all room hire free of charge.

 centre of town

 nearby parking & public transport